

# Data sheet

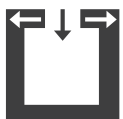
## FORMA



### Technical data

Nominal heat output	[kW]	7
Partial heat output	[kW]	3,5
Fresh air demand	[m³/h]	19
Room heating capacity (depending on house insulation)	[m³]	70 - 190
Fuel consumption	[kg/h]	0,9 - 1,7
Efficiency	[%]	80,3
Energy efficiency class		A+
Chimney draft requirement	[Pa]	12

### Characteristics



Balanced flue

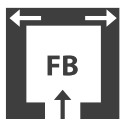


RLS system



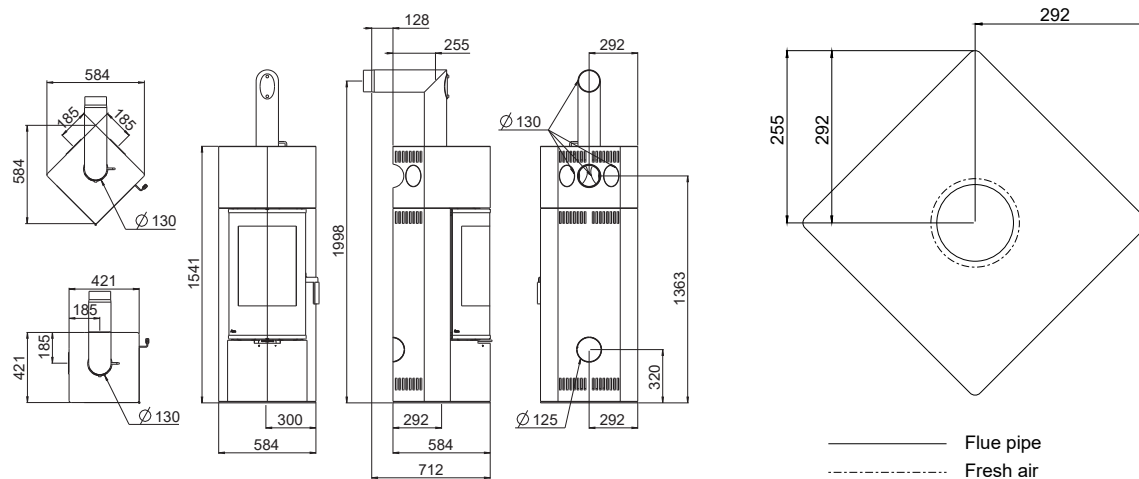
Energy  
efficiency

### Accessories



Fresh air floor  
connection

## Dimensions, weight and connection



### Dimensions

Height	[mm]	1541
Width	[mm]	421
Corpus depth	[mm]	421
Width diagonal	[mm]	584
Corpus depth diagonal	[mm]	584
Firing chamber [WxHxD]	[mm]	290x450x290

### Weight

Weight with steelshell	[kg]	~150
------------------------	------	------

### Flue pipe connection

Flue pipe outlet	[mm]	130
Original angle pipe connection height	[mm]	1998
Original angle pipe total depth	[mm]	712
Original angle pipe distance to rear wall	[mm]	128
Depth from rear wall to middle of flue pipe	[mm]	255
Original angle pipe side distance	[mm]	292
Rear connection height	[mm]	1363
Rear connection side distance	[mm]	185

### Fresh air connection

Diameter	[mm]	125
Connection height	[mm]	320
Side distance	[mm]	292
Floor connection side distance	[mm]	292
Floor connection depth	[mm]	292

## Safety distances

### Note

1. To non-combustible objects  
a > 40 cm b > 10 cm
2. To combustible objects and reinforced concrete load-bearing walls  
a > 80 cm b > 15 cm

